

*New....  
Fulfil your dreams*

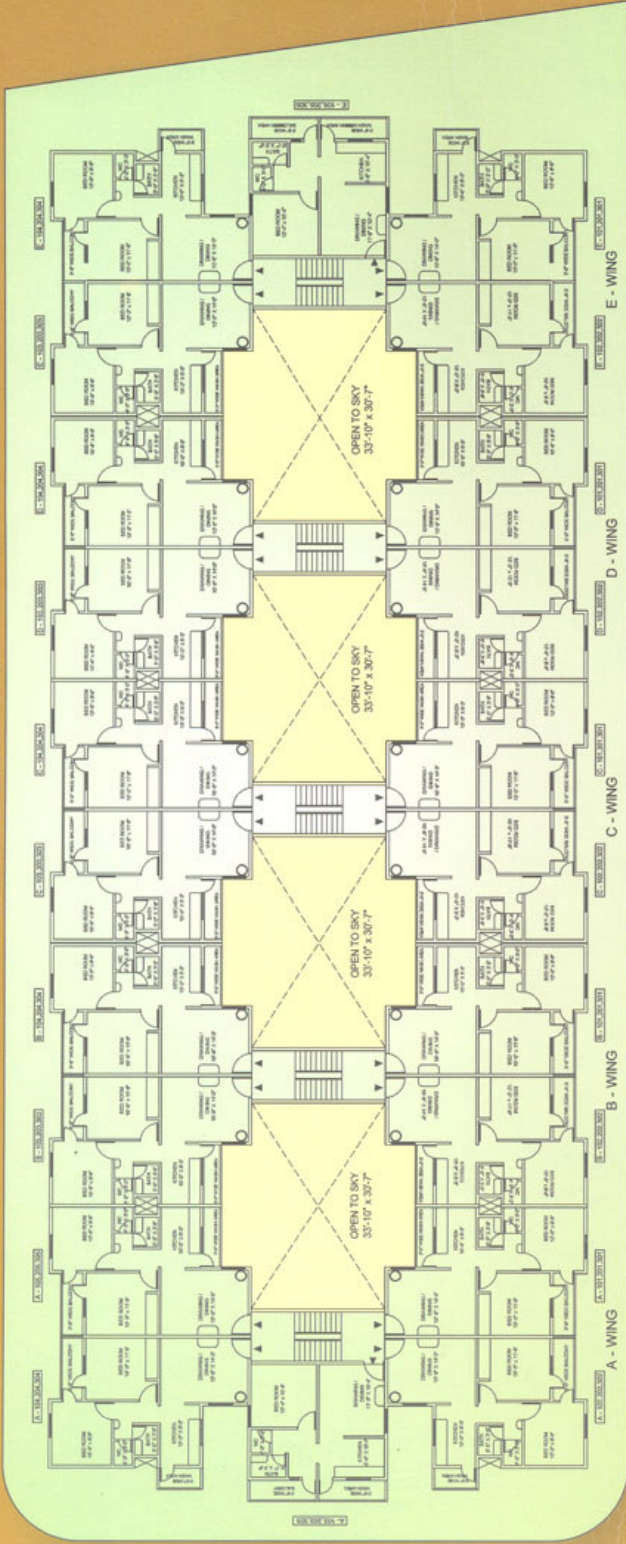


*Ruchira*

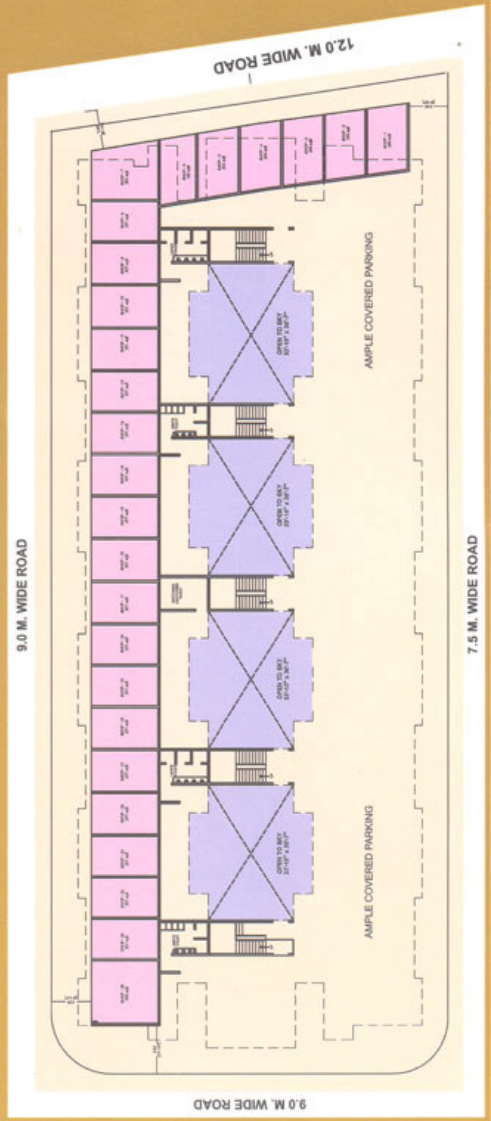


*Ruchira*  
HEIGHTS

**TYPICAL FLOOR PLAN (1st to 3rd)**



**GROUND FLOOR PARKING**

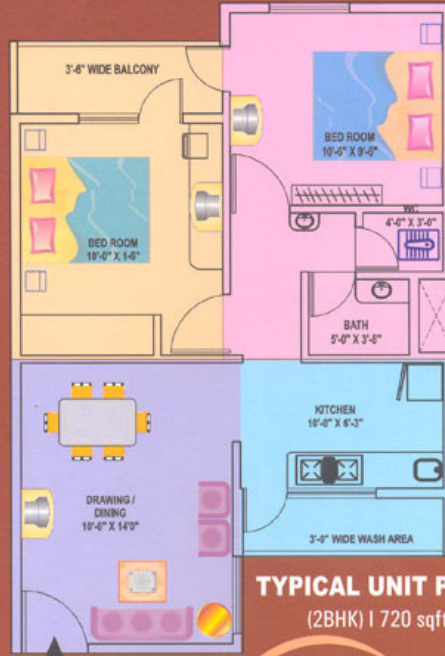


**FLAT TYPE  
2 BHK**

CARPET AREA - 555 SQFT (77.0%)  
 B/U AREA - 632.5 SQFT (88.0%)  
 SUPER B/U AREA - 720.0 SQFT

**FLAT TYPE  
1 BHK**

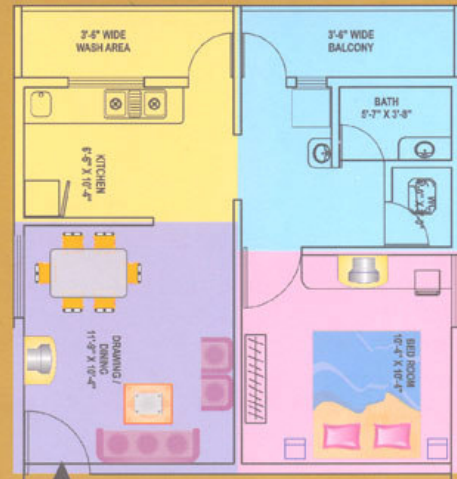
CARPET AREA - 452.0 SQFT (77.0%)  
 B/U AREA - 511.0 SQFT (87.0%)  
 SUPER B/U AREA - 590.0 SQFT



**TYPICAL UNIT PLAN**  
(2BHK) | 720 sqft



**TYPICAL UNIT PLAN**  
(1BHK) | 590 sqft



### Salient Features

- ✦ 3 Kms. from MIHAN EXIT POINT.
- ✦ 2 kms. from MAHARSHRI KARVE SHIKSHAN SANSTHA GROUP OF COLLEGES
- ✦ 3 Kms. from AHIRKAR MANAGEMENT COLLEGE
- ✦ 1 Km. from RAISONI IB (INTERNATIONAL BOARD) SCHOOL
- ✦ Nearest vicinity with YCC, RAISONI, PRIYADARSHINI ENGINEERING COLLEGES.
- ✦ within 2 kms.vicinity of Schools, Hotels, Market, Hospital, Police Station, Court and Bank.
- ✦ Opp. to Sant Gadge Maharaj Degree College.
- ✦ 16 colleges and school within 5 Kms. radius.
- ✦ Surrounded by Residential Cluster.

