

*Live in style,
live in
Nirmal Nagari.*



Head Office : 193, Nandanvan Main Road, Nagpur-440009.
Phone : 0712- 2740800, 2742900.
For booking & more details contact : Sunil More - 9881714259.





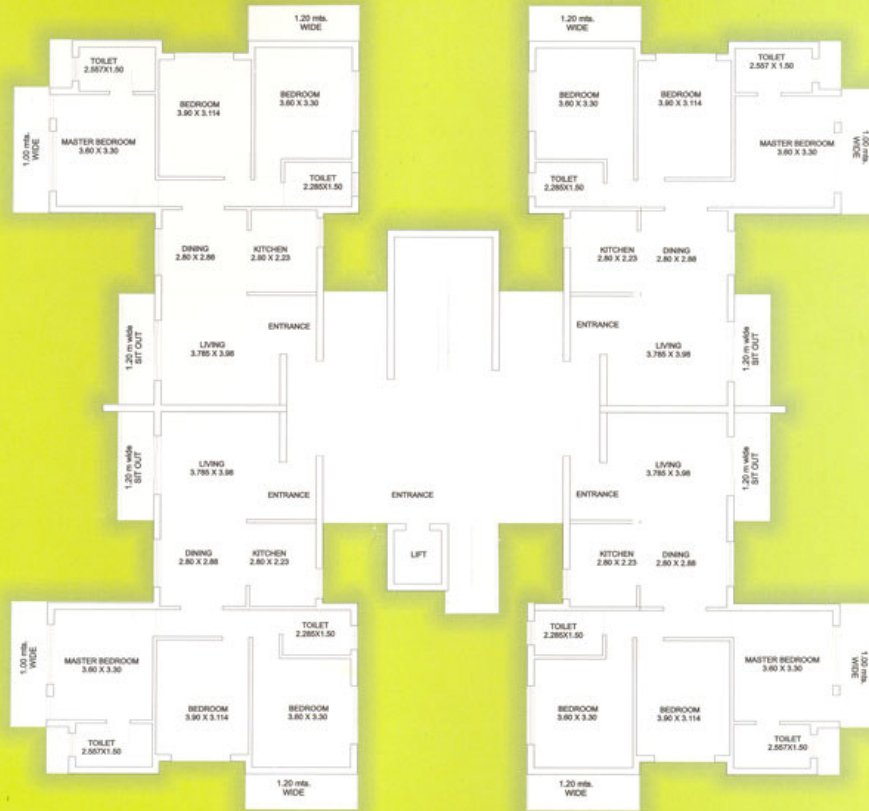
Typical Floor Plan



A-1- 3BHK Apartments
Super built-up area/unit : 1566 sq. ft.
No. of Floors : G+7
No. of units : 56



Typical Floor Plan



A-2- 3BHK Apartments

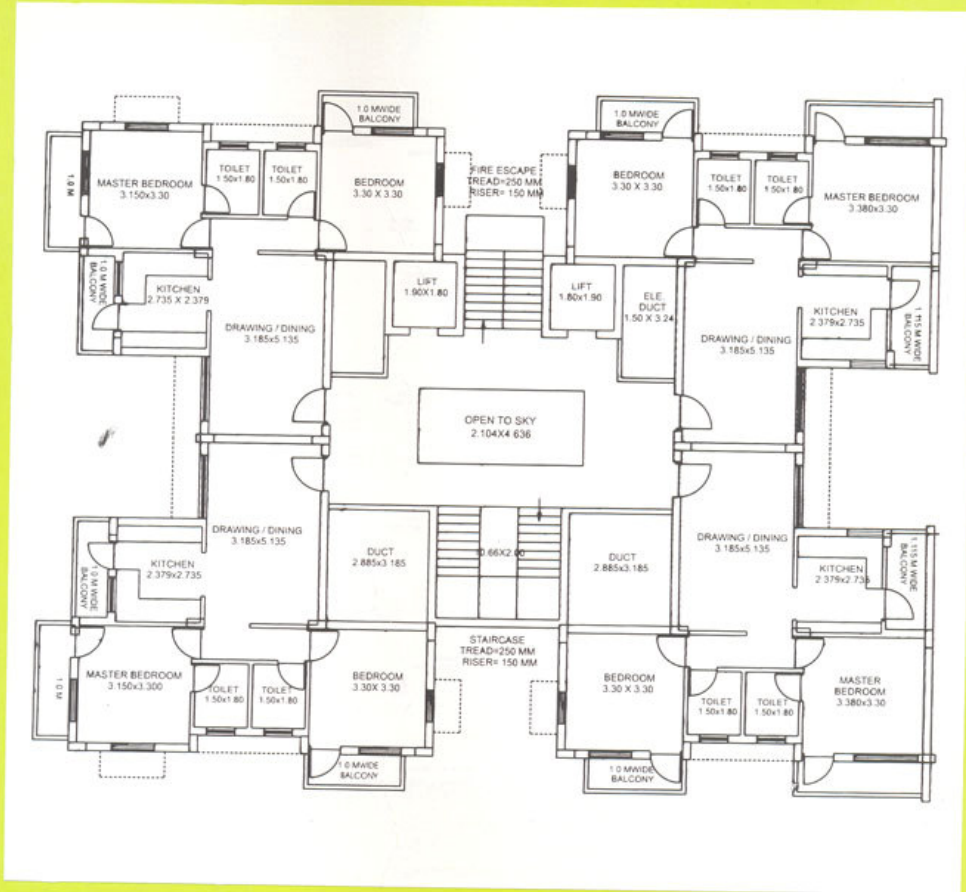
Super built-up
area/unit : 1414 sq. ft.

No. of Floors : G+7

No. of units : 56



Typical Floor Plan



B-3- 2BHK Apartments

Super built-up
area/unit : 917 sq. ft.
No. of Floors : G+7
No. of units : 56



Typical Floor Plan

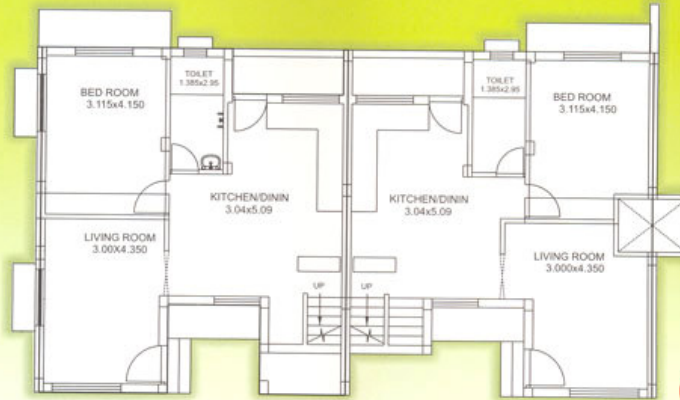


B-2- 2BHK Apartments

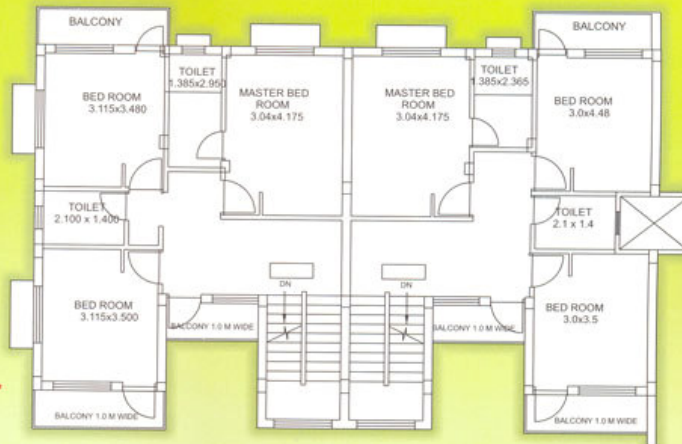
Super built-up
area/unit : 1087 sq. ft.
No. of Floors : G+7
No. of units : 336



Typical Floor Plan



Ground Floor



First Floor



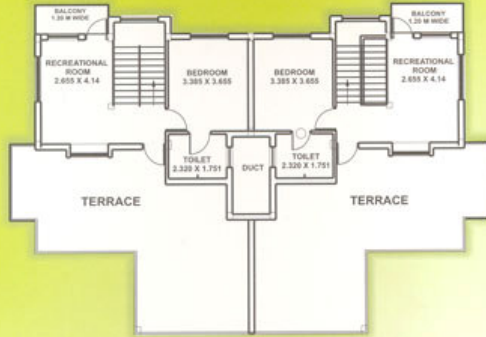
Row Houses

Super built-up
area/unit : 1522 sq. ft.

No. of units : 60



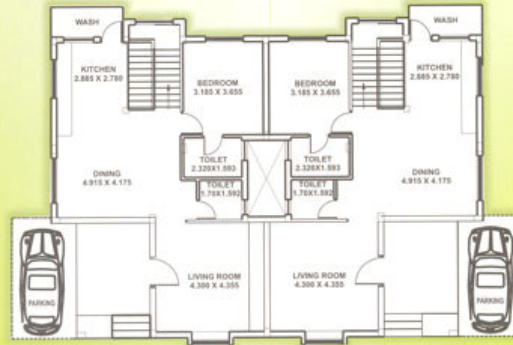
Typical Floor Plan



Second Floor Plan



First Floor Plan



Ground Floor Plan



Semi - Detached houses

Super built-up
area/unit : 2532 sq. ft.
No. of units : 20

Specifications & amenities for the residences of "Nirmal Nagari" at Umrer Road, Nagpur.

STRUCTURE :

- ♦ R.C.C. framed structure with
- ♦ External wall 9" thick brick masonry
- ♦ Internal and party walls of 4 & 1/2 thick brick masonry in 1:4 cement mortar.

PLASTER :

- ♦ 12 mm thick smooth plain plaster internal finish.
- ♦ Sand faced cement plaster and architectural finish in exterior

DOORS & WINDOWS :

- ♦ **Main Door :** Teak wood frame and T.W. decorative shutter with beading and Brass Fitting with safety locking system.
- ♦ **Other Doors:** Frame of Precast R.C.C. and shutters will be factory made 35 mm. thick flush door with beading and having good quality fixtures.
- ♦ **Bath & W.C. Door:** Pre-cast R.C.C. frame with ready made flush door
- ♦ **Windows :** Windows with protective M.S. Grills having clear glass panes finished with painting etc.

FLOORING :

- ♦ Vitrified/ Marble flooring in all the rooms.
- ♦ Common area with Kota Stone.
- ♦ 900mm height in W. C.
- ♦ 1800mm height in Bath.

KITCHEN :

- ♦ Working platform as per drawing with Black Granite stone.
- ♦ Glazed Ceramic Tiles dado above platform.
- ♦ Stainless steel sink.
- ♦ Provision for exhaust fan.

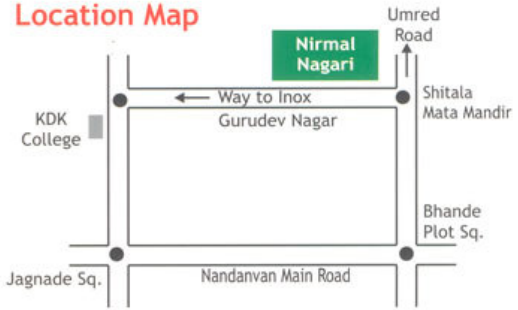
BATH & TOILETS :

- ♦ Standard white sanitary wares.
- ♦ Standard C.P. fittings.
- ♦ Provision for exhaust fan

STAIRCASE :

- ♦ R.C.C. Staircase with M.S. Railing and finished with kota stone on treads.

Location Map



ELECTRICAL :

- ♦ Concealed wiring with adequate number of light, fan and socket outlets points will be provided.
- ♦ ISO Marks Quality fitting used.
- ♦ Power point in all rooms.
- ♦ Protection for safety from electrical hazards will be provided.
- ♦ Common lighting will be provided.

T.V. & TELEPHONE :

- ♦ Concealed and open parking provided for all the flats.

PARKING :

- ♦ Covered and open parking provided for all the flats.

WATER SUPPLY :

- ♦ Provision for sump and over head water tank for drinking and washing.

PAINTS :

- ♦ Oil Bound Distemper or Acrylic paint with full putty complete.
- ♦ Cement based point or architectural finish in the exterior.

SECURITY :

- ♦ Security guard station with intercom facility.

ELEVATION :

- ♦ Aesthetic elevation keeping up with the latest trends.

TREATMENT :

- ♦ Water proofing for toilet & bath blocks.

Extra payable charges 1) Electric meter & substation charges 2) Solar system charges 3) One time maintenance charges 4) Service taxes 5) Registration charges

Note: This brochure is purely conceptual presentation & not a legal offering & the promoters reserve the right to alter and make any changes in elevation, specifications & plans as deemed fit.



Nirmal Ujwal

Credit Co-operative Society Ltd. Nagpur (Multi State)

Head Office : 193, Nandanvan Main Road, Nagpur-440009.

Phone : 0712- 2740800, 2742900.

For Booking & more details Contact : Sunil More - 9881714259.